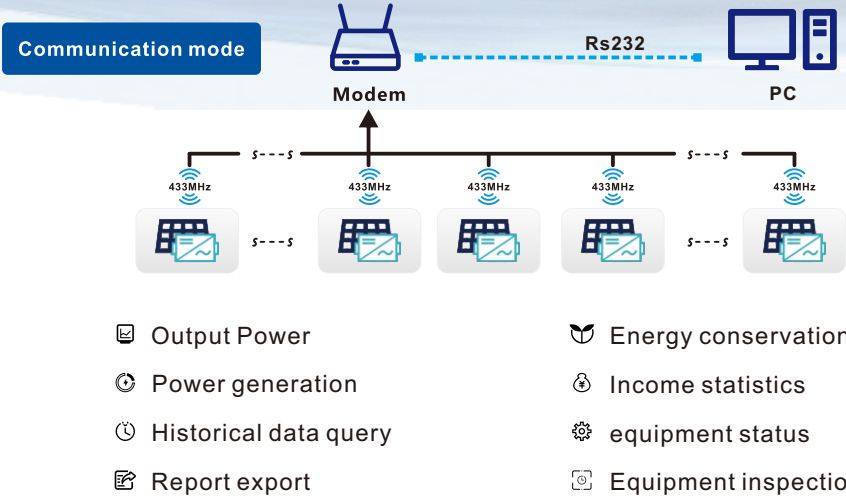


SOLAR MONITORING SYSTEM

..... Green Energy  
..... Smart Inverter **Expert** .....



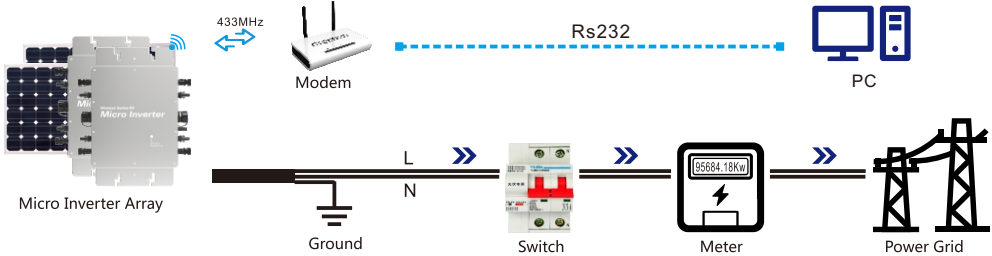
WVC-Modem  
USER MANUAL



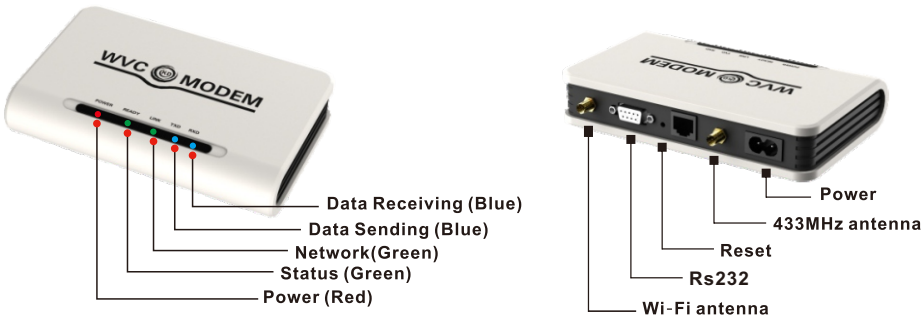
Data Collector  
WVC-MODEM

Parameter	
Input Voltage range	automatic shift 120/230V
Input frequency range	50/60Hz
Max Output Power	10Watt
G.W.	0.35KG
Size	160×100×32mm
Communication mode	433MHz+RS232
Transmission distance	1000M(open range)
Waterproof	IP23

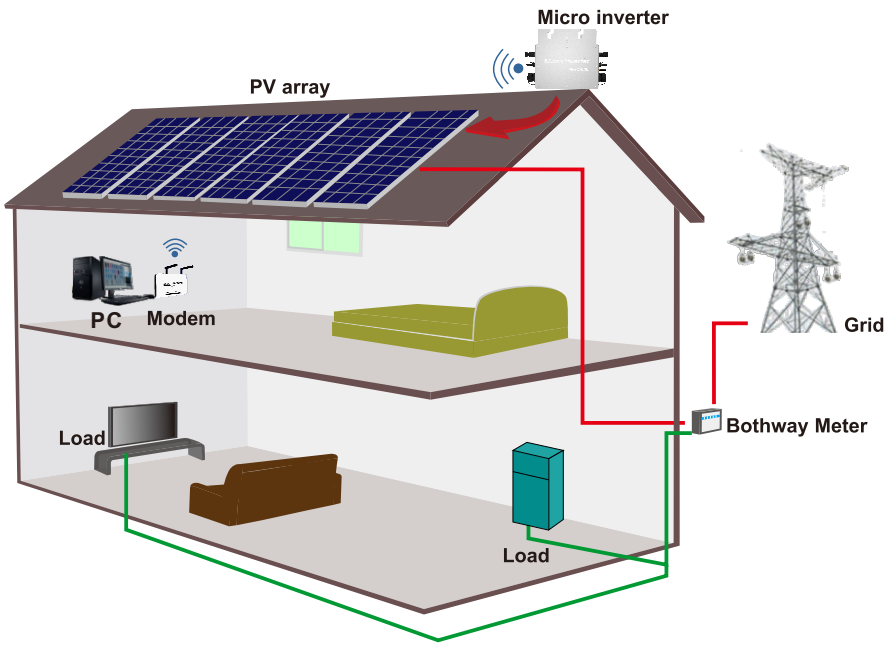
Running Mode



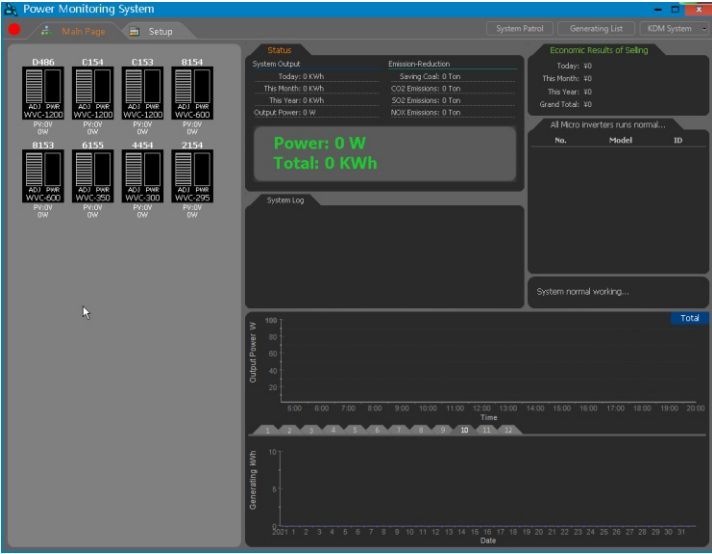
Modem indicator & button



System communication transmission diagram



The power monitoring system



The power monitoring system is a special software for the power generation system. The Modem communicates with the inverter in real time through wireless communication technology, and realizes data communication with the computer through the RS232 serial port connection.

The main functions include equipment working status monitoring, equipment power generation data monitoring, and equipment power generation daily, weekly and monthly curve analysis graphs, etc.

The normal operation of the power monitoring system must first install the power generation system, of which two components are necessary, namely the communication type solar micro-inverter and the WVC Modem

Download software

(1) USB TO Rs232



Rs232 data connection line driver

https://en.kaidengdg.com/uploads/file/61737c41495ee.rar

(2) KDMSetupN4.5



Monitoring system application

https://en.kaidengdg.com/uploads/file/61736d25cb644.zip



Note

- a) If the software cannot be accessed and downloaded due to regional restrictions, please contact the manufacturer or distributor to provide;
- b) In order to ensure the failure caused by USB power supply problems, please insert the USB cable into the USB port on the back of the desktop computer instead of the front USB port;
- C) Connect the components of the Modem as required, such as power cords, antennas, RS232 data lines, etc.



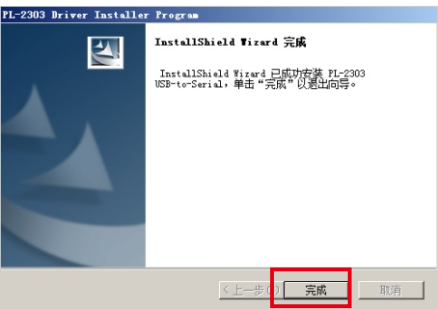
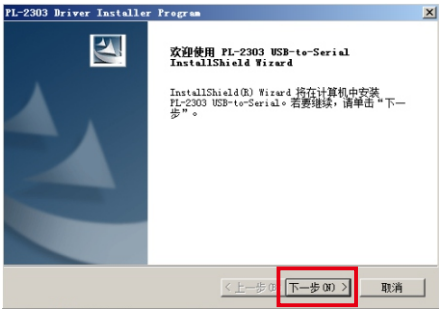
Hardware

- 1. Processor: 2.0GHz or above, dual-core 3.0GHz or above is recommended;
- 2. Memory: 1G or more, 2G or more is recommended;
- 3. Hard disk: 80G or more, 160G or more is recommended;
- 4. Graphics card: 32M video memory or more, discrete graphics card with 64M video memory or more is recommended;
- 5. Operating system: Windows XP SP2 and above;

1

Install RS232 driver

After decompressing the downloaded USB TO Rs232, open the "PL2303\_Prolific\_v1.7.0.exe" file, follow the prompts and click "Next" to complete the driver installation



2

Connect

1) Please connect the RS232 data cable end to the MODRM, and insert the USB port into the computer USB port  
(\*In order to ensure communication power supply and contact problems, it is recommended to connect the USB port to the rear USB port of the desktop computer instead of the front USB port)



2) When the USB cable is connected to the computer, the system will show that the new hardware has been found and will automatically complete the driver installation, as shown in the figure

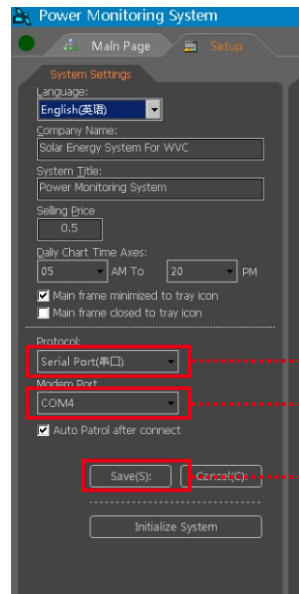


\*After the driver is installed, the COM port code currently used by the MODEM will be displayed. Please remember this COM port code

3

System Configuration

Install and run the monitoring software (KDM), click the "Setup" menu, and configure the system settings as shown in the figure below.

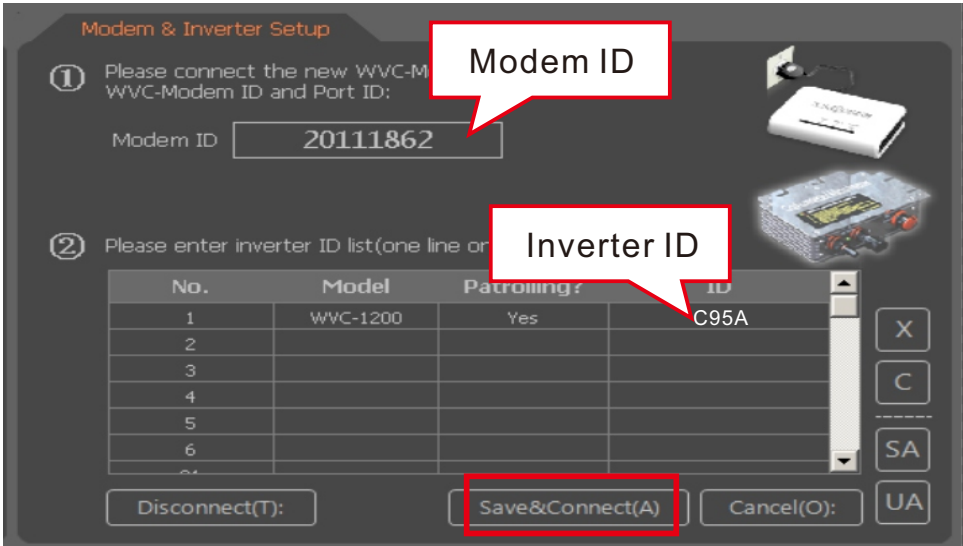


- Select the "serial port" method
- Select the Com port currently used by "MODEM"
- Click "Save"

4

Modem & Inverter Setup

After filling in the Modem ID and inverter ID in the MODEM&inverter menu bar, click Save to complete.  
\*The inverter ID consists of the inverter model code + the last three ID codes on the inverter body.E.g:To add the inverter whose WVC-1200 code is "600095A" to the monitoring system, only the corresponding model code "C" (refer to Part 1: Code) and the last three digits of the inverter "95A" are combined as Just fill in "C95A" into the monitoring list.



Part 1 : code

Model	Coding
WVC-295	2
WVC-300	4
WVC-350	6
WVC-600/700	8
WVC-1200/1400	C

Part 2 : Inverter last 3 bits No.

